



Responsibility for the future

Our practised values by conviction:

schmid
schrauben hainfeld

FAIR PLAY



> Of course we observe the legal regulations. Those are much stricter concerning dealing with CO₂, energy, waste and chemicals compared to other regions.

CONTINUOUSLY IMPROVEMENT



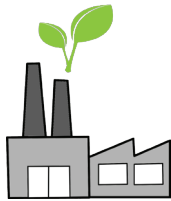
> Our aim is a continuous improvement of our CO₂-balance. This is ensured by the management systems Energy ISO 50001 and Environment ISO 14001. Suggestions for improvement of every single employee are actively communicated in a regular manner.

HIGHEST PRODUCT QUALITY



> Our premium products allow more efficient application solutions with fewer screws, which preserve the resources. Further our high-quality screws ensure a longer lifetime as well as easier and faster screwing-in.

ENERGY SAVING PRODUCTION



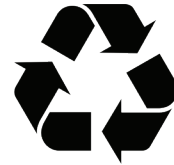
> The change to electro-driven lift trucks and LED-lightning as well as new energy-saving technologies allow us a more environmental-friendly production. Machines in manufacturing and heat recovery during hardening process are constantly improved.

SOCIAL STANDARDS



> The exploitation of employees and child labour have no place in an Austrian factory. We also take care, that further social standards are complied by our suppliers and partners.

RECYCLING



> Thanks to the good slide coating our premium products can be removed from timber without residue. Therefore the single timber beams can be assembled to new buildings which saves resources.

HEALTH AND WELL-BEING AT WORK



> We take care of the health of our employees and use wherever possible health und environmental compatible chemicals and raw material. For example, we have been using a Cr(VI)-free corrosion protection for our Premium RAPID® screws for a long time.

SMALL ECOLOGICAL FOOT PRINT



> Our partners are primary local european suppliers of raw material. So the transport routes are shorter compared with container ships, which cause high pollution.

CONSTANTLY ANALYSIS OF THE ENERGY FLOW



> We regularly analyse our energy flow and our ressource consumption, so we are able to quickly act against „energy guzzlers“ and wastage. Parallel we actively work on developments and optimisations in the field of energy recovery out of the manufacturing process.